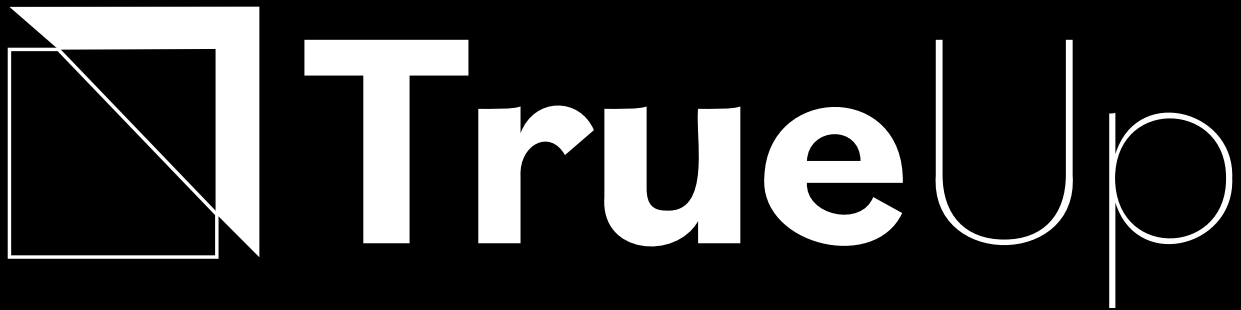


How to



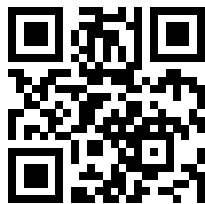
Step-by-step instructions

This document includes all of the step-by-step instructions needed to use your TrueUp product.

Learn more, watch videos, & purchase additional TrueUp Kits

Simply scan this QR code to visit

TrueUpHanging.com



Holds up to
8 lbs / 3.62 kg



Notes on surface prep:

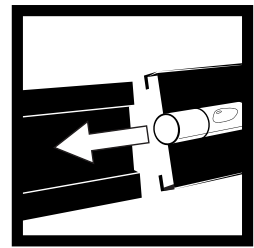
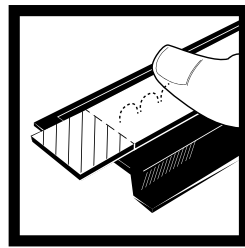
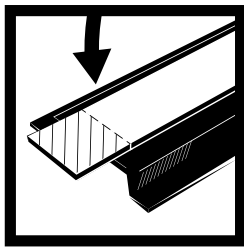
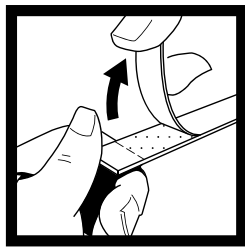
In general TrueUp adhesive strips **will work** on surfaces that are **clean** and **flat**. (Painted walls, painted wood, painted brick or cinder blocks, tile, metal, glass, laminates, plastics, acrylics, pvc, polyethylene, polypropylene).

TrueUp is **not recommended** for (Heavily textured walls, wallpaper, unpainted brick, fabric, or nonstick materials)

Using your mount and bubble level:

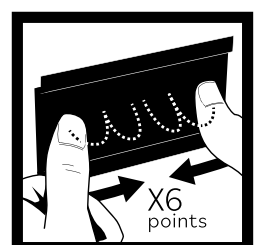
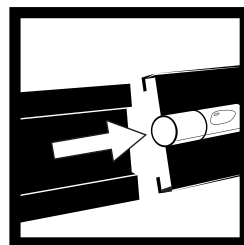
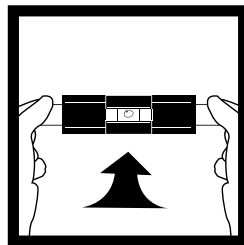
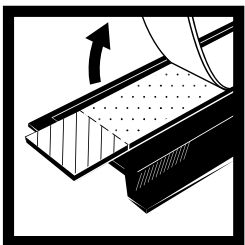


Step 1. Clean & Prepare surface. Typically a clean cloth and water works great. In some cases rubbing alcohol. Household cleaners not recommended.



Step 2. Peel off **middle section** on **yellow side** of adhesive liner. Apply TrueUp adhesive strip to the back of the wall mount (peel, place, and pressure).

Step 3. Slide level onto mount.



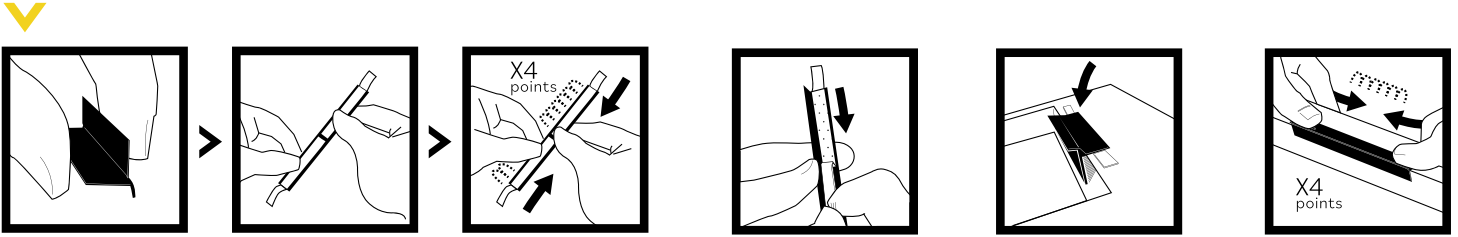
Step 4. Turn wall mount over and peel off wall side adhesive liner.

Step 5. Grab the mounting plate, bring close to wall, press onto wall when level.

Step 6. Slide level off the mount.

Step 7. Press firmly on the mounting plate with thumbs 5 sec from outside working inside. **For best results wait 1 hr before hanging.**

Using your adaptor:



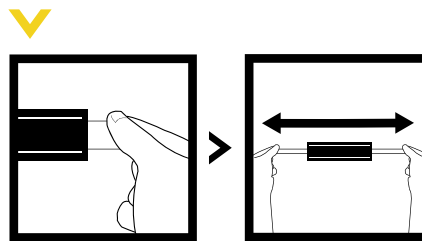
Step 1. With extruding bar facing you, apply adhesive to adaptor. Press and hold for 5 sec.

Step 2.
Peel adhesive backing.

Step 3.
Attach to frame. Small ridge faces downwards. adhesive against wall-side of frame.

Step 4.
Press and hold for 5 sec at 4 points along surface.

Simple and easy to remove:



Pinch both left and right adhesive strip tabs, pull outward and parallel to the wall.

The Adhesive will stretch, and release the mount from the surface.

After the mount is removed, the remainder of the adhesive can be removed from the mount.

The mount can now be fitted with a new TrueUp strip and reused.